



## VARIATION TO CONDITIONS ATTACHED TO APPROVAL

Willogoleche Wind Farm, South Australia, (EPBC 2011/5850)

This decision to vary conditions of approval is made under section 143 of the *Environment Protection and Biodiversity Conservation Act 1999* (EPBC Act).

### Approved action

|   |  |
|---|--|
| <b>Person to whom the approval is granted</b> | Willogoleche Power Pty Limited<br>ABN 22 112 307 589   |
| <b>Approved action</b>                        | To construct and operate the Willogoleche Wind Farm, South Australia [see EPBC Act referral 2011/5850] |

### Variation

|  |   |
|--|---|
| <b>Variation of conditions of approval</b> | The variation is:<br><br>Delete conditions 2 and 3 attached to the approval and substitute with conditions 2 and 3 specified below.<br><br>Delete the definition of 'commencement of construction' and substitute with the definition specified below.<br><br>Delete Appendix A1 and Appendix A2 attached to the approval and substitute with Appendix A1 and Appendix A2 specified below.<br><br>Add Appendix A3 and the definition of 'EPBC Offset Policy' specified below. |
| <b>Date of effect</b>                      | This variation has effect on the date the instrument is signed.   |

### Person authorised to make decision

|                          |  |
|--------------------------|--|
| <b>Name and position</b> | Monica Collins<br>Assistant Secretary<br>Compliance and Enforcement Branch |
| <b>Signature</b>         |  |
| <b>Date of decision</b>  | 12 December 2016   |

## Conditions attached to the approval

2. To offset the potential impacts on *Iron-Grass Natural Temperate Grassland of South Australia*, the person taking the action must secure an offset site of 4 hectares identified as 'proposed EPBC offset' in the maps at Appendices A1 and A2, under a Heritage Agreement under the South Australian *Native Vegetation Act 1991*. The Heritage Agreement must be submitted to the **Department** prior to being registered. The Heritage Agreement must be registered by 1 July 2018.
3. To offset the potential impacts on *Iron-Grass Natural Temperate Grassland of South Australia*, the person taking the action must submit to the **Minister** for approval an Offset Management Plan (OMP) for the offset site at least three months prior to the **commencement of construction**.

Construction must not commence before the plan is approved by the **Minister**.  
The approved plan must be implemented.

The OMP must include, at a minimum, the following information:

- a) a textual description and map to clearly define the location and boundaries of the offset site. This must be accompanied with the **offset attributes** and a **shapefile**;
- b) a schedule, including the process and timeframes, for registering the Heritage Agreement specified in Condition 2;
- c) completion criteria and interim condition targets for *Iron-Grass Natural Temperate Grassland of South Australia* in accordance with the **EPBC Offsets Policy**;
- d) details of management actions to protect and enhance the extent and condition of habitat values of the offset site including, but not limited to, management of livestock, weed control, erosion and sediment control, fire management, and restrictions on access;
- e) a monitoring schedule, including the undertaking of ecological surveys by a qualified ecologist to assess the success of the management actions against completion criteria and interim condition targets;
- f) the timing, responsibilities and performance criteria for management actions;
- g) a commitment to include in the compliance reports detailed at Condition 8, reports on the management actions undertaken in the offset areas and the outcome of those actions, including identifying any need for improved management;
- h) a description of the potential risks to successful management of the offset site, and a description of the contingency measures that would be implemented to mitigate these risks; and
- i) details of parties responsible for management, monitoring and implementing the plan, including their position.

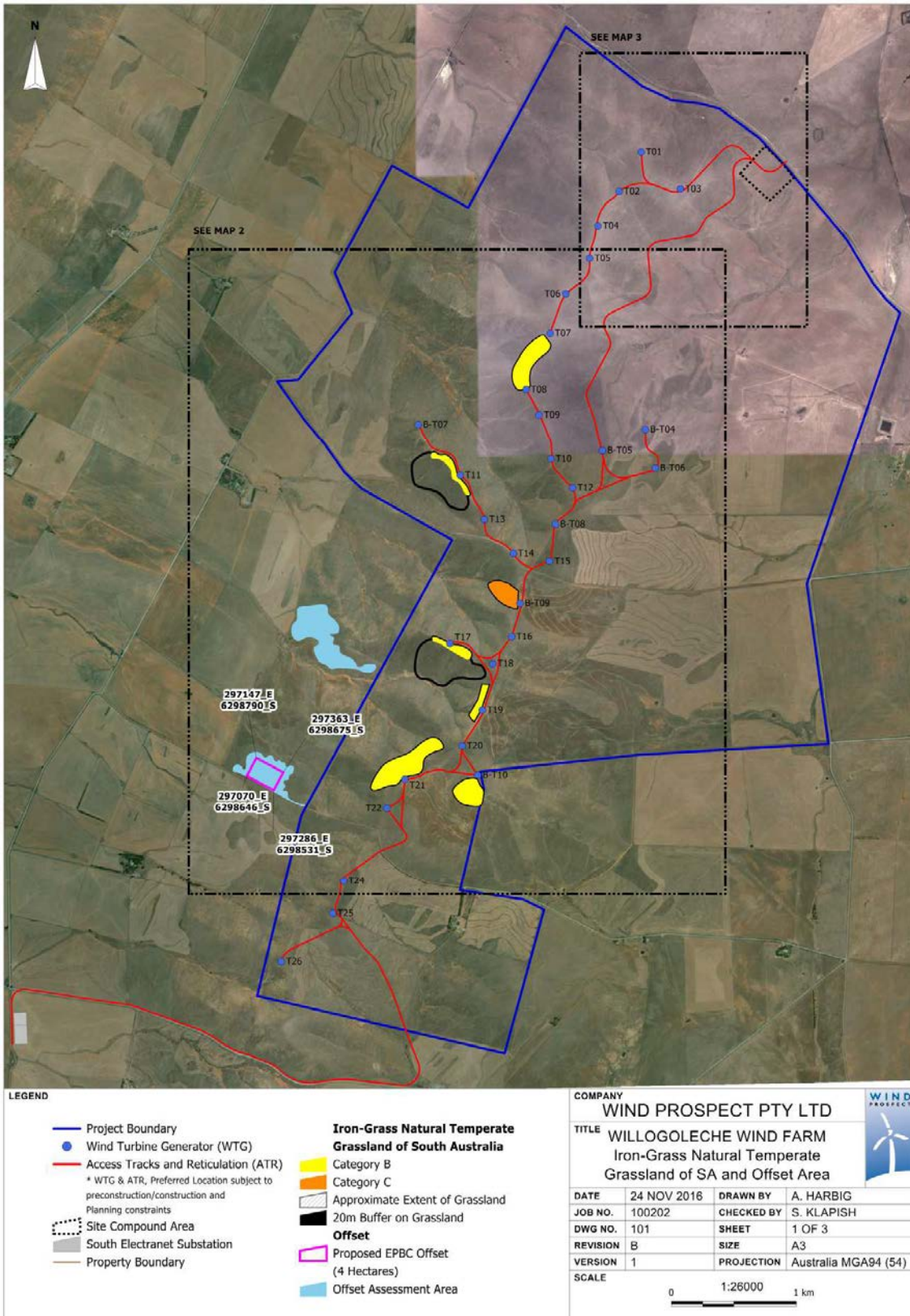
## Definitions

**Commencement of construction:** Commencement of any **works** involved in the construction phase of the project, including clearing vegetation, the erection of onsite temporary structures and breaking the ground for buildings or infrastructure. This excludes the:

- erection of signage, fences, barriers or bunting for the purpose of excluding areas containing listed threatened species and/or ecological communities; or
- **works** undertaken in the area identified as 'Site Compound Area', shown in the map at Appendix A3.

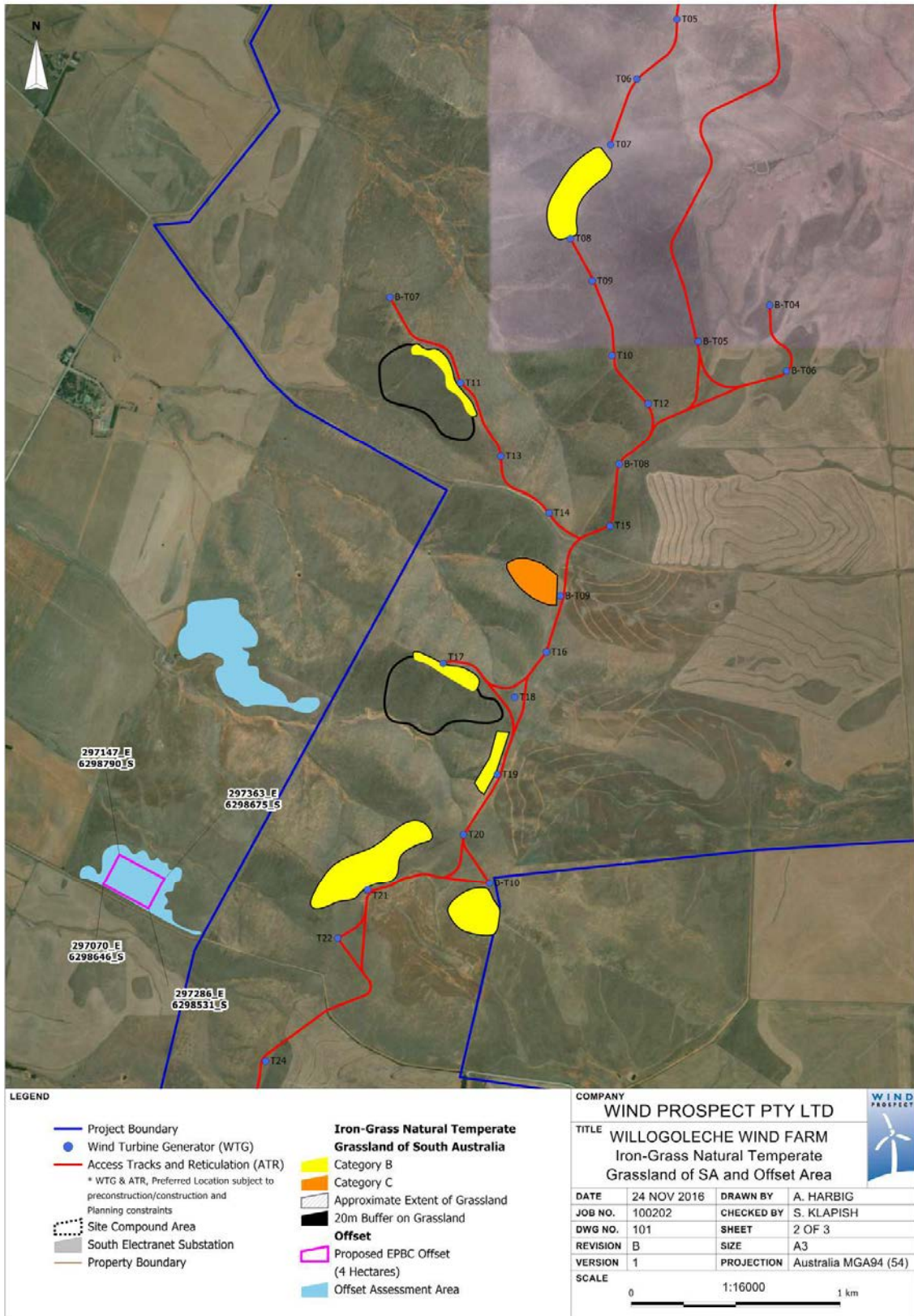
**EPBC Offset Policy** means the *Environment Protection and Biodiversity Conservation Act 1999 Environmental Offsets Policy October 2012*.

# Appendix A1





# Appendix A2



# Appendix A3

