



ENGIE



ENGIE entered the Australian retail electricity market in 2005 as Simply Energy.

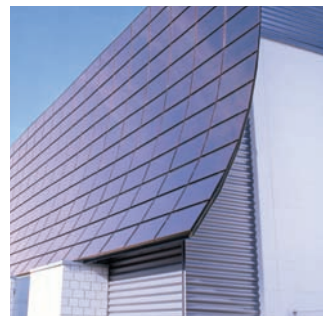
One of the fastest-growing energy retailers in Australia, Simply Energy now has more than 550,000 electricity and gas accounts in Victoria, South Australia, New South Wales and Queensland.

Customers include residential homes, small and medium businesses and the commercial and industrial sector.

The company also offers a suite of energy solutions across solar, LED lighting and battery storage to help customers reduce energy costs and minimise environmental impact.

Building on its energy solutions commitment, Simply Energy was one of the first companies in Australia to enter a sales agreement with Tesla Energy to retail its 'Powerwall' home battery storage product.

Simply Energy is jointly owned by ENGIE (72 per cent) and Mitsui & Co Ltd (28 per cent).



For more information phone: 13 88 08 or visit [www.simplyenergy.com.au](http://www.simplyenergy.com.au)

[engie.com.au](http://engie.com.au)

