

**Minutes:** Minutes of the 9<sup>th</sup> Meeting of the Hills of Gold Windfarm Community Consultative Committee (CCC)

**Thursday, 17 February 2022**

**Meeting Venue:** Held at the Nundle Memorial Hall

**Members Present:** Ian Worley; Jamie Chivers (Wind Energy Partners); Jacqueline Niemand (Engie); John Krsulja (Hills of Gold Preservation Inc Representative); Kay Burns (Tamworth Regional Council); Margaret Schofield; Megan Trousdale (Nundle Business Tourism & Marketing Group Representative); Meredith Anderson (Engie); Michael Chamberlain; Paul Smith (Upper Hunter Shire Council); Peter Schofield

**Apologies:** Bruce Moore; Nathan Skelley (Liverpool Plains Shire Council)

**Independent Chair:** David Ross

**Secretary:** Debbie Corlet

<b>Agenda Items</b>	<b>Who to Present</b>
1. Introductions and Apologies	David Ross
2. Declaration of Pecuniary or Other Interests	David Ross and All
3. Previous Minutes	David Ross
4. Business Arising from Previous Meeting	David Ross
5. Correspondence	All
6. Brief Update on Proposal	WEP / Engie
Questions and Answers	
7. General Business	All
Where to from here re: assessment process?	
8. Next Meeting	All

Agenda Item	Discussion	Action/By Whom
1.	<p><b>Introduction and Apologies</b></p> <p>Meeting commenced at 6:34 pm. David welcomed everyone to the 9<sup>th</sup> meeting. Apologies – Bruce Moore. Christine Robertson has resigned from the CCC, and Paul Smith is her replacement from Upper Hunter Shire Council.</p> <p>Jamie explained that Brooke is no longer with them, but Jacqui is the new Stakeholder and Community Engagement Manager for Engie.</p>	
2.	<p><b>Declaration of Pecuniary or Other Interests</b></p> <p>David advised that he was paid a fee to chair the meeting as is Debbie for taking the meeting minutes.</p>	
3.	<p><b>Previous Minutes</b></p> <p>It was agreed by all in attendance that the Previous Minutes were true and correct.</p>	
4.	<p><b>Business Arising from Previous Meeting</b></p> <p><b>Road upgraded on Crawney Road – is it related to the project or a landowner.</b> These are actions of the relevant landowner. This is not project related activity.</p> <p>Members then asked a series of questions re Crawney Road regarding construction equipment and materials. These included queries about how many oversized / over mass vehicles (versus light vehicles) will be required as it is believed that this is not mentioned in the Traffic Assessment. A question was asked about how Engie will respond to DPE’s transport concerns relating to access or purchase of Crown Lands / Reserves and no other viable options.</p> <p>It was also observed that Jenkins Street has been identified in the Response to Submissions as a Transmission Line traffic route. With the need for concrete trucks for transmission pole pads, earthmoving vehicles for land clearing and road building, transmission poles and lines, wouldn’t this suggest that Crawney Road is in fact a transport route for infrastructure including heavy vehicles?</p> <p>Jamie – Crawney Road doesn’t use any oversize or over mass. It is in the Response document. Oversize and over mass will not be moving on gravel from the other side. 2% of construction traffic could be used that way. That 2% is in the EIS and there is no change in that. The roads required in the first assessment.</p> <p>Some members expressed concern that the road is heavily used by the community for recreation.</p> <p><b>Jamie to provide breakdown of vehicles.</b> The Amendment Report provides an updated summary and breakdown of vehicles and numbers across different stages of project construction. Please see Chapter 6.4 Traffic and Transport of the amendment report and associated supporting documentation in Appendix H.</p>	<p>ACTION 1 – Jamie - Traffic Impact update at next CCC meeting</p> <p>ACTION 2 – Jamie – To provide specific references (App H &amp; Transport Addendum) for transmission line construction impacts on Nundle &amp; Crawney Road</p>

Agenda Item	Discussion	Action/By Whom
	<p><b>Transport Management Plan to be discussed at the next CCC meeting.</b> Jamie observed that his understanding of this action is to ensure that school bus times and routes are incorporated into the Transport Management Plan (TMP). Commitments were added to avoid using heavy vehicles moving during peak school bus periods. These will be revised in the draft TMP to be issued to DPIE and councils for their satisfaction.</p> <p><b>Jamie to get more information from CASA.</b> Rye Park Wind Farm is currently under construction and will utilise 200 candela lights.</p> <p><b>Jamie to share examples of the shielding from CASA.</b> The landscape and Visual Impact Assessment Addendum includes Chapter 4.3 Additional Assessment of Aviation Lighting. This includes Figure 12 – Zone of Visual Influence for night lighting and Figure 13 Example of Aviation Light Shielding. A community member observed that CASA informed them that no wind farm in Australia is using shielding. In Glen Innes, the CCC are still not happy. The 200 candela sounds like a whole heap of uncertainty. Jamie – Our aviation consultants advise that these lights do not need to be switched on at all times. We will continue talks with CASA and work with the community at Biala Farm.</p> <p><b>Re-label the laybys.</b> The presentation has been updated and will be loaded onto the website.</p> <p><b>Confirm number of trucks through the peak construction time.</b> The Amendment Report provides an updated summary of trucks at 63 per day during peak construction. Please see table 6-15 in Chapter 6.4 Traffic and Transport.</p>	
5.	<p><b>Correspondence</b> – David observed that the only correspondence received were advanced questions provided by some CCC members via email. To be discussed shortly.</p>	
6.	<p><b>Update on Proposal by Meredith, Jacqueline and Jamie</b></p> <p>Brief presentation given (see attached). Community member discussed claim that the development footprint avoids all Class 7 and 8 soil types slide, concerned that the soil report brings into question the methodology and how the classification has changed from Class 7 and 8. What is the justification for the change of soil type? Did you use the new updated maps?</p> <p>Jamie – Broad scale mapping – it is not designed to be site specific. There are about 30 test pits and we had geologists onsite to revise soil. I'd have to speak to a specialist about this. Jamie – We got our own independent consultants to assess.</p> <p>Member observed that land was cleared before / during the EIS on Wombramurra Mountain and approved by LLS for agricultural use. Asked a series of questions:</p>	

Agenda Item	Discussion	Action/By Whom
	<ul style="list-style-type: none"> <li>• Is there any project infrastructure, including turbines located on / or around this land clearing? Approximately 25 hectares were removed.</li> <li>• Have these removed hectares been included in the 40% reduction in total development footprint?</li> <li>• Or included in the reduction of koala habitat needed to be removed?</li> </ul> <p>Jamie –The clearing must have happened after the EIS lodgement. Most of our surveys occurred prior to lodgement.</p> <p>The member continued discussing clearing on Wombramurra Mountain and the investigation that took place into land clearing. Was there any knowledge that the Wombramurra Mountain was going to be cleared? When did WEP sign off the Environmental Agreement as part of the illegal land clearing investigation and environmental outcome? Why wasn't this Agreement or the illegal land clearing recognised or mentioned to the CCC when this issue was raised and asked about at previous meetings?</p> <p>Meredith – We are comfortable with the timings as we don't have ownership of the land and where there was clearing. We are just as interested to find out as you.</p> <p>Jamie – We were aware, but we had nothing to do with it. We hope to lease that land. We have no rights to clear lands – then or still to this date.</p> <p>Another community member observed that we can see the pattern from the mosaic clearing. We can see it from here but that's not the ridge line where the turbines are to be located.</p> <p>A discussion then followed on the reduction of the number of turbines to reduce visibility. The proposal for 98 turbines were smaller turbines. The generation from each turbine won't change. Reduced number of households will be near turbines. However, a member observed that when the project was first presented it was a 70 to 80 turbine wind farm and then it went up to 98 and has come down again from that.</p> <p>A lengthy discussion occurred with respect to the Community Enhancement Fund. Jamie observed that it is now \$3,000 proposed per turbine per year, once installed and operating. It would commit to 70 turbines. There has been an increase in admin fees, independent chair etc as well as a number of changes from Council. There were questions regarding how the Committee will be chosen? How will funds associated with this development be spent? What is the current split of turbines and payments to the three councils? There was an observation that some members of the Hills of Gold Preservation Inc will not work with the Community Enhancement Fund.</p>	<p>ACTION 3 – Jamie to respond to Wombramurra Mountain questions</p> <p>ACTION 4 – Jamie to advise if he was aware of the clearing of land for wind farm purposes</p> <p>ACTION 5 – Jamie to report back on what the split is</p>

Agenda Item	Discussion	Action/By Whom
	<p>The three councils still need to negotiate arrangements with Engie with respect to what should be contributed per turbine as well as the committee structure. This may be anticipated to be a condition of approval from DPE.</p> <p>Jamie – We’ve got feedback through the consultation. Working well on other wind farm CCCs – other Councils but it needs to be worked out still.</p> <p>A community member observed that we had a workshop on this issue as the proposal put it in the EIS and then it never came back to the CCC. The structure has been imposed on us. The community don’t know, and they should be more involved.</p> <p>Jacqui and Jamie noted that they had engaged a tourism academic from University of Newcastle to investigate the impacts of wind farms on tourism in regional areas. From the academic’s study, there was no evidence of negative impacts, but there are notable opportunities. These were questioned by a community member who observed that the study author did not visit Nundle and Hanging Rock and states that successful wind tourism is dependent on community cooperation and is more successfully located away from areas of high aesthetic value.</p> <p>Jamie –Engie would like to engage with local businesses. There is significant support from local businesses, and we are very encouraged.</p> <p>Another community member questioned who is going to drive the tourism here. The majority of Nundle Business Tourism and Marketing Group Inc contains people / businesses that do not support the wind farm.</p> <p>A discussion then followed on whether businesses in the area actually are supportive or against the proposal. Different views were shared. A community member asked for the names of those businesses that participated in ENGIE’s business survey in 2021 could be released publicly. Jacqui – participants were not advised prior to completing the survey that their information would be made public. So, due to privacy rules, names of the businesses can not be released.</p> <p><b>What’s Next</b></p> <p>Respond to Further Request for Information made by DPE by 25 March 2022. DPE makes a recommendation to the Independent Planning Commission (IPC). IPC undertake 12-weeks process to assess and make their final determination on whether to grant the project Development Approval. Construction commences (anticipated late 2022 / early 2023).</p> <p>Meredith – We have a really tight schedule and will not seek an extension past 25<sup>th</sup> March. The CEO was up today and is looking very closely at this project.</p> <p>DR – If DPE receives all the information sought, it generally takes them around 3 months to write an assessment report. DPE still want additional information on transport, visual and have questions about biodiversity. So, the assessment report is then given to the IPC at maybe the end of June (if DPE receives all that it is seeking). That’s when the clock starts ticking.</p>	

Agenda Item	Discussion	Action/By Whom
	<p>The IPC must make a decision within a 3-month period. They must hold public hearings as well during that period. They have held these over video for the last 2 years.</p> <p><b>Responses to Members' Advanced Questions</b></p> <p>Jamie – We need to work through these questions still (for DPE) as they have come up. Some may not be able to be answered tonight.</p> <p>Jamie – Devil’s Elbow – we’re aware of concerns from Council about the heritage studies which we did. Geophysical investigations have been agreed to by Engie. Continuing to investigate more specific detail. Will be assessed by the experts. We will provide an update to the CCC once this is finalised.</p> <p>A discussion took place between Jamie and a community member regarding the use of crown land. The member believed that there hasn’t been any consultation about this. Jamie – Matthew Kellegner who are archaeologists invited those who could register if they wanted to do a site visit. We had a representative from Nungaroo Land Council and Gomerioi Applicant across the wind farm corridor.</p> <p>Community member asked what consultation has been undertaken with Nungaroo Lands Council in regard to the private haulage road proposed for the bypass of Devil’s Elbow? As far as I am aware, there has not been any consultation with Nungaroo in relation to this and from the information I have, it appears the land the proposal will traverse is to be handed back to Nungaroo.</p> <p>Jamie – We have been engaging with Nungaroo as part of the Cultural heritage assessment report process. We have also responded to specific concerns recently and we do have a meeting with them, and something is already progressing.</p> <p>The discussion then moved to the topic of the dimensions of the road regarding Devil’s Elbow. A member noted that they couldn’t find the gradient of the private road. The internal roads mentioned elsewhere in the document are 5 metres wide. Is that the same dimensions that you are proposing? It needs to be 5-metre pavement to carry the weight.</p> <p>Jamie – The design is in the submission. Not at the same time – it’s one way. I need to look at the design again. The depth of the soil is to be able to support the weight. There is currently 10 to 15 metres of soil. The alignment has changed. We’ve done more work and cross section that those tunnels are going in. Strength of the soil with the top and the bottom. It’ll be easier to drill a hole and test. I can’t recall the grade. We need to look at contractors and look at the grade.</p> <p>The community member then asked of a reference can be provided in the document. If the grade is over 14%, then the road will be sealed. Do you believe it is going to be sealed?</p>	<p>ACTION 6 – Jamie to report back on Nungaroo meeting</p> <p>ACTION 7 – Jamie to provide reference for Devil’s Elbow private road width, shoulders &amp; steepest road gradient</p>

Agenda Item	Discussion	Action/By Whom
	<p>Jamie – The road will be sealed.</p> <p>A community member asked about whether all the agreements are in place with the landowners regarding the transport route to enter the site at this stage?</p> <p>Jamie – That is commercial sensitive information. We need to have land agreements in place in order to build. During this discussion, it was noted that, on previous projects, wind farm developers have been able to obtain government approval without having the land agreements in place. However, there are expected to be a number of conditions.</p> <p>DR – Please remember that this will also be considered by the IPC –they’ll have to have public hearings etc. They may talk to particular groups as well.</p> <p>A community member noted how the areas for koalas are over near the forestry / crown lands. They suggested that, as part of the proposal, trees could be put into that area and join it up to the forestry section and fencing it. We can benefit from this.</p> <p>Jamie – Creating koala habitat with stewardship sites to determine if they are suitable. There is a process that we can go to. A site that protects the habitat.</p> <p>Members then asked about stewardship through the National Parks and whether it would need to be a suitable distance from the turbines. What is the distance?</p> <p>Jamie – We haven’t established that as yet. Biodiversity methodology we have to do in a number of vegetation zones. There may be areas that may be closer, and the type of vegetation might not be affected but there could be areas that might be better. We’ve identified specific areas. It is subject to change and is species dependent. This needs to be undertaken in consultation with the Biodiversity Conservation Trust.</p> <p>A community member noted that they have obtained through the Freedom of Information Act the environmental agreement with Wind Energy Partners that was signed off after the land clearing investigation took place. When we discussed at our CCC, it was signed off on this environmental outcome. Is this part of your biodiversity offset?</p> <p>Jamie – No, it’s not part of the biodiversity offsets. Clearing happened and we had nothing to do with that. Department investigated. We didn’t know about the outcome of the investigation until recently. That is an outcome with the landowner. We had a registered interest in the land. We have to sign off on anything that is proposed. I can’t recall the exact date when it was signed off. At that point we had an interest in the land.</p> <p>David (to Jamie) – After the land clearing took place, I gather that the Department of Planning made the arrangements with the landholder. Yourself and Engie weren’t privy to that discussion?</p>	<p>ACTION 8 – Jamie to reference the depth of soil for the pavement</p> <p>ACTION 9 – Jamie to report back on the koala habitat with stewardship sites</p>

Agenda Item	Discussion	Action/By Whom
	<p>Jamie – The department had their own investigation / make good or actions from their investigations. The government had to make sure we were happy with that due to the interest we had on those lots of land. We were advised where the conservation area would be registered as part of our interest in the land.</p> <p>Some community members noted that there is no representation from Timor on the CCC and there’s been ample opportunity. There are 60 landholders, and they are very vocal. Why didn’t you invite people from Timor? Why were they never involved?</p> <p>David – It wasn’t intentional. With any community process, people were invited to apply for the committee and no one from Timor expressed an interest.</p> <p>Another community member asked members why didn’t they (people from Timor) ask?</p> <p>Meredith – We went last year for consulting, and it was a good turnout at the BBQ. In November 2021, we held another information session during the day, and we were told by one resident it wasn’t convenient during the day as they were working. So, this week a session was held between 5pm and 7pm and one person turned up.</p> <p>A member discussed community members who share concerns of NPWS regarding biodiversity and bush fire safety and the inability to fight fires with fixed wing aircraft and agree with NPWS recommendations of removal of turbines on Ben Halls Nature Reserve boundaries. Community members asked that Engie remove all turbines that threaten the lives of neighbouring properties and landholders due to the inability to deploy fixed wing aircraft to fight bush fires.</p> <p>A community member noted that there is real concern in some of the Responses to Submission that it says, “majority of support for the proposal”. You are not recognising the objections – there were 400 objections and 200 in support. There’s a lot of effort for people to sit down and write a document. The people have gone to length to write detailed objections.</p> <p>A debate then took place across the committee about numbers of people in support of the proposal versus numbers of people against the proposal. A member also observed that they had not been consulted with (re their place of business).          Jamie – we have consulted with you.          David – This is not the time for such a discussion. The IPC will consider this and the issues.</p> <p>A community member observed that their dwelling is labelled DAD_3 in the RTS. It is missing from one map and in the document, it states it should be given little to no consideration. Why is this when the dwelling is under construction, WEP have known it was going in since the beginning of the proposal some 4 years ago and visuals were done and deemed moderate by WEP yet high by DPE. Why should it be given little to no consideration? It is less than 3km from the proposal. My brother’s DA and started dwelling has been labelled as a non-associated structure. It’s an approved dwelling being built. Why does it appear on your map as a structure? Member also tabled some material.</p>	<p>ACTION 10 – Jamie and member to discuss dwelling under construction</p>



Agenda Item	Discussion	Action/By Whom
	<p>Jamie – We have accessed that. Visual and noise impact assessments were done. You don't need to install anything. There's no noise threshold on your property. You are a very important neighbour to this project.</p> <p>Community member tabled the Wind Energy Guide, Attachment B – Negotiated Agreements Advice Sheet. They observed that it was discussed at the last meeting, but it is still happening that landowners are feeling continuing pressure with phone calls etc. Some have requested contact via email only but are still getting contacted by phone. I feel for the landowners over the next year who are going to be approached. Who will be the main contact for landholders going forward? Is there a Code of Ethics? How are they approached?</p> <p>Jamie – I'm very confident we haven't approached anyone via phone who has requested via email only.</p> <p>Meredith – Someva remain responsible, though I have reached out to some landholders to create a new relationship.</p> <p>A community member wanted it noted that they are all for renewables, but I believe it must be better for the whole community. The SEARS asked, "To identify an alternative project if this proposal is rejected". What alternative renewable project can you offer to NSW if this proposed development is rejected by the DPE or becomes unviable?</p> <p>Meredith – We wouldn't be investing if we didn't think it wouldn't be approved. We are working through it that it will be approved. Getting it to construction by the end of the year. Some are commercially sensitive, but some are on the website in regard to other projects, that you are more than welcome to have a look at.</p> <p>Jamie (to a community member) – in the media today, you said we haven't had a meeting in 15-months. I think that was unfair to say.</p> <p>Member – We had no official CCC meeting last year.</p> <p>Jamie – We agreed not to have a meeting and that was between all of us.</p> <p>David – There was a meeting with the CCC last year. Yes, I called it a proposal update. So, this is on me, as the previous meeting late last year was solely an update – but we did meet. Generally, there's no meetings after an EIS has been submitted and until approval is given.</p>	<p><b>ACTION 11 – Is there a Code of Ethics for the wind farm industry?</b></p>
7.	<p><b>General Business – N/A</b> No further business was discussed.</p>	
8.	<p><b>Next Meeting</b> – A discussion took place about the appropriate time for the next CCC meeting. Agreement was obtained to have a meeting in April where the committee could understand the answers to all the questions from DPE.</p>	

Meeting closed 9.16 pm.

**Appendix 1: Actions**

<b>Page No</b>	<b>Action No</b>	<b>Description</b>	<b>Date Raised</b>
2	1	Traffic Impact update at next CCC meeting	17 <sup>th</sup> February 2022
2	2	Jamie – provide specific references for transmission line construction impacts on Nundle & Crawney Road	17 <sup>th</sup> February 2022
4	3	Jamie to respond to Wombramurra Mountain questions	17 <sup>th</sup> February 2022
4	4	Jamie - to advise if he was aware of the clearing of land for wind farm purposes	17 <sup>th</sup> February 2022
4	5	To report back on what the split is	17 <sup>th</sup> February 2022
6	6	To report back on Nungaroo meeting	17 <sup>th</sup> February 2022
6	7	Jamie to provide reference for Devil’s Elbow private road width, shoulders & steepest road gradient	17 <sup>th</sup> February 2022
7	8	Reference the depth of soil for the pavement	17 <sup>th</sup> February 2022
7	9	Jamie – To report back on the koala habitat with stewardship sites	17 <sup>th</sup> February 2022
8	10	Jamie and member to discuss dwelling under construction	17 <sup>th</sup> February 2022
9	11	Is there a Code of Ethics for the wind farm industry?	17 <sup>th</sup> February 2022



# Hills of Gold Wind Farm Project Update

February 2022

RESTRICTED

INTERNAL

PRIVATE



# Acknowledgement of Country

We begin today by acknowledging the Traditional Custodians of the land on which we meet today. We pay respects to Elders past, present and emerging and celebrate the diversity of Aboriginal peoples and their ongoing cultures and connections to the lands and waters of NSW.



# Where is HOG in the NSW Planning Process

# Project Assessment Process





2

# Revised Design

# Revised Design







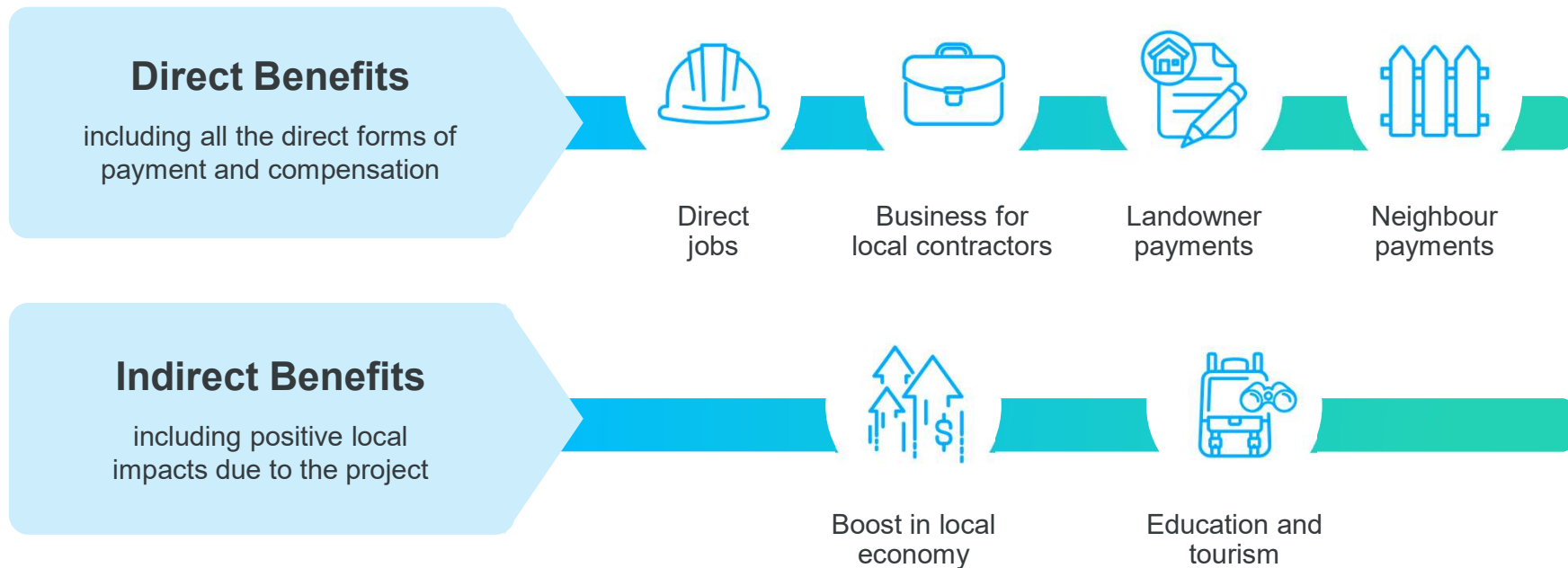
3

# Project Opportunities

# Community benefits

## Direct and indirect benefits

If approved, the project will deliver a range of benefits for the region:



# Community Benefits

## Local investment

- **\$104 million** in local investment and financial contributions, incl. upgrades to local roads and waterway crossing, community fund programs, wages and profit to local communities and services.
- **Community Enhancement Fund**
  - \$3,000 per turbine per year, once installed and operating. Expected over a period of at least 25 years.
  - To be administered by an independent community panel and will support community-driven projects and initiatives.
- **Construction Sponsorship Fund: \$150,000**
  - A one-off fund to assist the community during the construction period.
  - To be administered by ENGIE, opportunities to be identified through engagement with the local community.
- **Energy Offer**
  - ENGIE's energy retailer will offer an exclusive electricity plan to the residents within the Nundle, Hanging Rock and Crawney area.
  - Details still being formalised, however it is expected that ENGIE will cover the wholesale cost component of all electricity used, enabling residents to save on their energy bills.

# Opportunities

## Job creation

- A range of skills will be required during construction:

Earthworks plant operator

Cementers and grouters

Heavy machinery operators

Labourers

Building contractors

Pipelayers

Mechanical and electrical engineers/fitters

Heavy vehicle truck drivers

Welding and engineering

- Training and skills development

- Opportunity for new skills in the region in the growing renewable energy industry.

During construction  
(approx. 2-3 years)

211 direct jobs  
404 indirect jobs

Once operational  
16 permanent jobs  
48 indirect jobs

# Opportunities

## Tourism

- ENGIE is working to co-exist and complement existing heritage and natural elements to increase tourism opportunities.
- University of Newcastle engaged to conduct a study on the industry impacts and opportunities for wind farm tourism. Key findings:
  - *There is very little evidence that the presence of wind farms has a negative economic impact on tourism in rural locations*
  - *Tourists are not deterred by wind farms, and are often drawn to them as points of interest*
  - *Key opportunities are emerging such as adventure tourism, eco-tourism and educational tourism incorporating wind farm infrastructure*
- Some concerns about potential impacts to tourism expressed in public submissions. As a result, recent project changes have been made:
  - A temporary carpark to be built in Nundle for construction workers to access local goods and services without affecting traffic
  - A pedestrian crossing proposed to be built in Nundle to improve safety
  - Working with council to agree upgrades to local bridges and roads





# Community Engagement

## Engagement activities

Continuing to increase our engagement activities:

- Community information hubs and drop-in sessions
- Meetings with key stakeholders, landowners, neighbours and business owners, Community Consultative Committee
- Newsletters, distributed quarterly via email and mailouts
- Media – proactive through media releases, interviews with radio, TV and newspaper
- Email updates on key updates and milestones
- Website updated and promoted
- Factsheets, project video
- Stakeholder and Community Engagement Manager appointed





## What's next?

- Response to Submissions completed in January 2022
- Respond to Further Request For Information in March 2022
- DPIE makes a recommendation to the Independent Planning Commission (IPC)
- IPC undertake 12-week process to assess and make their final determination on whether to grant the project Development Approval
- Construction commences (anticipated late 2022 / early 2023)

## How to get involved

- Sign up for our newsletter to receive regular project updates
- Check out the website to find out more details
- Voice your interest to TRC, DPIE, local MP
- Register your interest in future employment or local supplier opportunities







[engie.com.au](http://engie.com.au)

Actions from CCC Meeting # 9 on February 17<sup>th</sup>, 2022.

Action No	Description	Response
1	Traffic Impact update at next CCC meeting	To be presented at the next CCC.
2	Jamie – provide specific references for transmission line construction impacts on Nundle & Crawney Road	<p>Appendix G Traffic and Transport Assessment in the EIS</p> <ul style="list-style-type: none"> <li>- Section 3.3.1.4 “Switching Station Access Route” refers to the use of local access roads off Crawney Road for the proposed transmission line route.</li> <li>- Section 3.3.1.6 “Importation of Quarry Material” the following is referred: “There are a number of existing quarries located within approximately 80km of the Project, including quarries located at Tamworth, Willow Tree, Currabubula, Ardglen, Barry Road and Crawney Road. For Crawney Road, assume peak of 10 trips per day, maximum of 2 trips per hour. For the remainder, a combination of Nundle Road and Lindsay Gap Road would be utilised.</li> </ul> <p>Appendix H Traffic Impact Assessment in the Amendment Report</p> <ul style="list-style-type: none"> <li>- Section 4.1.3 Construction Workers Access refers to 2% of traffic using Crawney Road from the Upper Hunter LGA</li> <li>- Section 4.6 Traffic Distribution shows 2% of light vehicles using Crawney Road south of Nundle.</li> </ul> <p>In addition the BDAR has assessed upgrades to tracks on private land and any biodiversity impacts associated. Section 1.5.1 Project Infrastructure in the Updated BDAR submitted with the latest RFI provides the Transmission Line Access Tracks as part of the assessed impact. Table 10 in this document summarises assessed impact.</p>
3	Jamie to respond to Wombramurra Mountain questions	The project continues to consider the area referred to as native habitat for which impact is included in the revised development footprint calculations. There remains one turbine within this area.
4	Jamie - to advise if he was aware of the clearing of land for wind farm purposes	There was no land clearing for wind farm purposes as discussed many times in this CCC. There was no knowledge of this clearing prior to it taking place.
5	To report back on what the split	There are 10 Turbines proposed in the UHSC and 55 turbines proposed in the Tamworth

	is	Regional Council. For the purpose of calculating the Community Enhancement Fund split the numbers have been agreed at what was submitted in the EIS (unless further reductions are actually built) which was 14 in the UHSC and 56 in the Tamworth Regional Council area.
6	To report back on Nungaroo meeting	Nungaroo were consulted during the preparation of the EIS and Cultural Heritage Assessment Report. Two members of Nungaroo ALC were present during site walk overs covered over 5 days. Other members of the Nungaroo have been present during community meetings. Consultation remains ongoing including proposed site walk-overs and inclusion of further heritage understandings in the Heritage Management Plan.
7	Jamie to provide reference for Devil's Elbow private road width, shoulders & steepest road gradient	Please see Amendment Report Appendix P.1 Devils Elbow Engineering which provides a preliminary design with scale. The drawing includes sealed road, sealed shoulder, areas of fill and area of cut descriptions. The gradient of the road will be refined in detailed design but has been confirmed feasible by transport contractors RJA.
8	Reference the depth of soil for the pavement	Further geophysics has been completed which confirms the report findings submitted in the Amendment Report. Please see Section 2.2.3 Statement Heritage Impact Recommendations and sub-heading "Geophysical Assessment".
9	Jamie – To report back on the koala habitat with stewardship sites	Action 9 – We can confirm that the Biodiversity Stewardship sites being investigated have the potential for Koala Habitat to provide habitat offsets in the same vicinity as the project.
10	Jamie and member to discuss dwelling under construction	Discussions have been held.
11	Is there a Code of Ethics for the wind farm industry?	The project is constantly reviewing industry material produced by CEC, Re-Alliance, DPE and NWFC to ensure that our consultation with neighbours and landowners is transparent and provides the opportunity for benefit sharing agreements to those closest to the project.