

**SOMEVA
RENEWABLES**

LEGEND

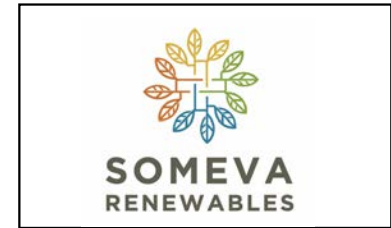
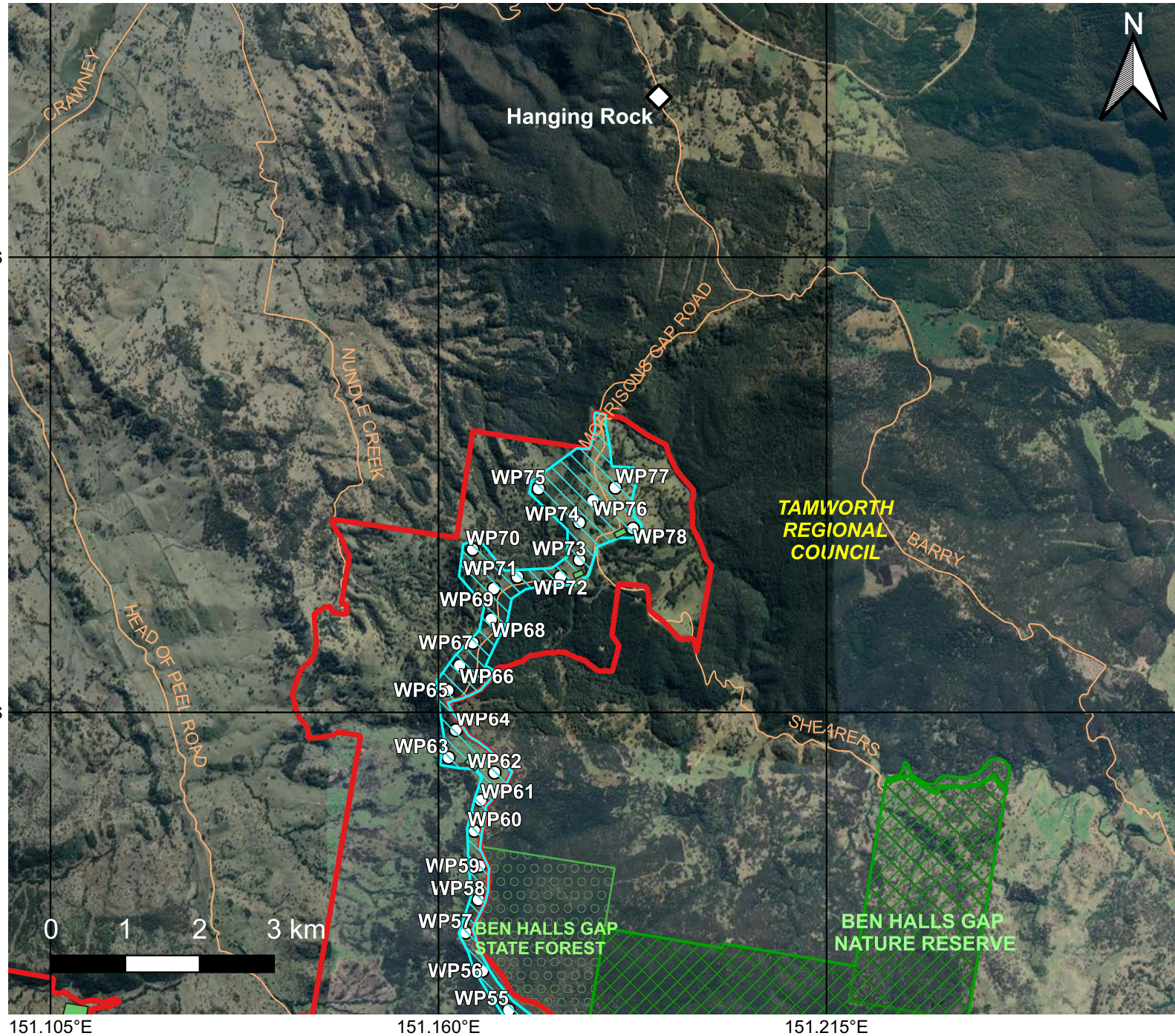
- Site Boundary
- Development Corridor
- Local Government Area
- Arterial/Minor Roads
- 330kV Liddell - Tamworth Transmission Line
- Turbine Area (100m Buffer)
- Towns
- Indicative Ancillary Infrastructure Locations (O&M, Substation, Laydown and Concrete Batching Plant.)
NB: Indicative Battery and Transmission Lines Locations to be added when confirmed

Hills of Gold Wind Farm
Preliminary Layout

PROJECT: Hills of Gold Wind Farm
LAST MODIFIED: 21/04/2020
VERSION: 6

MAP
1 of 3





LEGEND

- Site Boundary
- Development Corridor
- Local Government Area
- Arterial/Minor Roads
- Turbine Area (100m Buffer)
- Towns
- Indicative Ancillary Infrastructure Locations (O&M, Substation, Laydown and Concrete Batching Plant.)
NB: Indicative Battery and Transmission Lines Locations to be added when confirmed

Hills of Gold Wind Farm
Preliminary Layout
Northern Section of Site

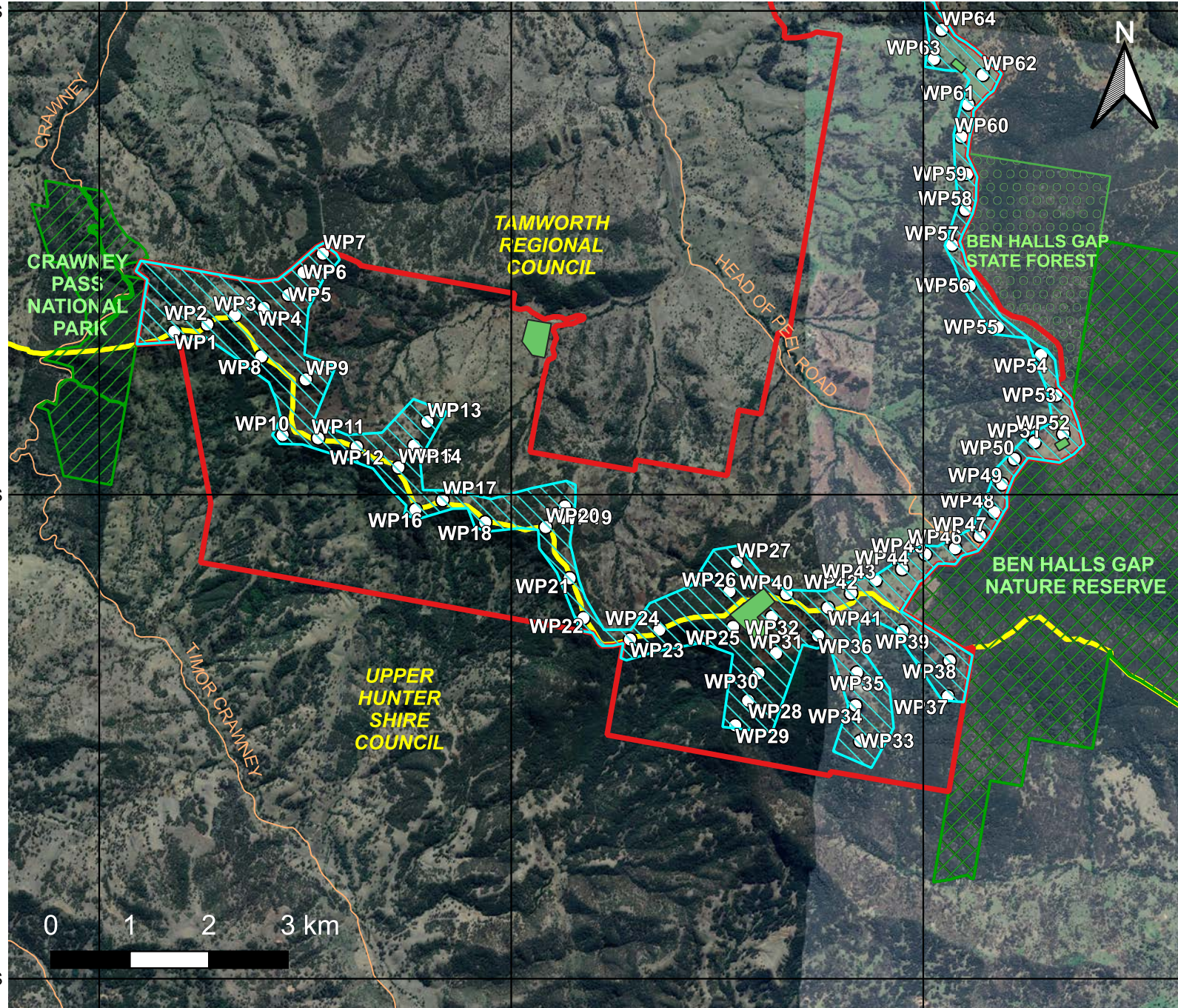
PROJECT: Hills of Gold Wind Farm
LAST MODIFIED: 21/04/2020
VERSION: 6

MAP
2 of 3

31.560°S

31.615°S

31.670°S



151.050°E

151.105°E

151.160°E



SOMEVA
RENEWABLES

LEGEND

- Site Boundary
- Development Corridor
- Local Government Area
- Arterial/Minor Roads
- Turbine Area (100m Buffer)
- Towns
- Indicative Ancillary Infrastructure Locations (O&M, Substation, Laydown and Concrete Batching Plant.)
NB: Indicative Battery and Transmission Lines Locations to be added when confirmed

Hills of Gold Wind Farm

Preliminary Layout

Southern Section of Site

PROJECT: Hills of Gold Wind Farm
LAST MODIFIED: 21/04/2020
VERSION: 6

MAP
3 of 3