

220° 230° 240° 250° 260° 270° 280° 290° 300° 310° 320° 330°

SW

WSW

W

WNW

NW

General notes:

Coordinates:
Easting 303928, Northing 6309278

Camera: Nikon D850 digital SLR, 50mm focal length

Date: 27 June 2024 Time:10.58am

Original Page Format - A4 Landscape

Photomontage PM4 is illustrated at a view angle of around 120 degrees which is within the central, binocular field, of human vision.

Photomontage limitations

A photomontage can never show exactly what the wind farm will look like in reality due to factors such as different lighting, weather and seasonal conditions which vary through time and the resolution of the image. Also a static image cannot convey turbine movement.

The images provided give a reasonable impression of the scale of the turbines and the distance to the turbines, but can never be 100% accurate.

The viewpoints illustrated are representative of views in this location, but cannot represent visibility at all locations.

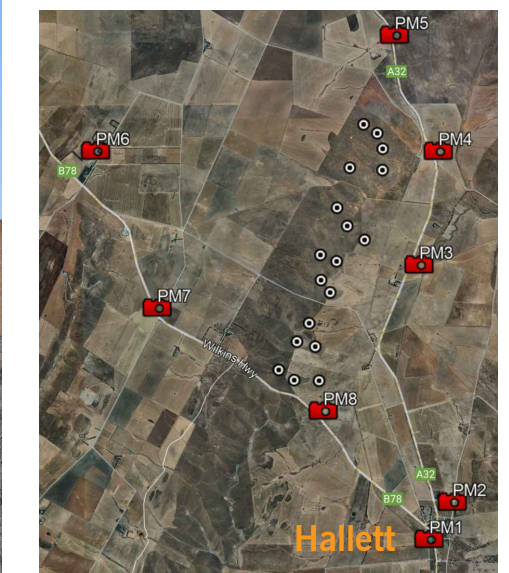


Photo location plan



Photomontage PM4 - Existing 120 degree field of view south west to north north west from Uooloo Road (across Barrier Highway). Approximate distance to closest wind turbine 1.3km



Photomontage PM4 - Existing detail 40 degree field of view

Extent of detail view



Figure 4
Photomontage PM4 - proposed