

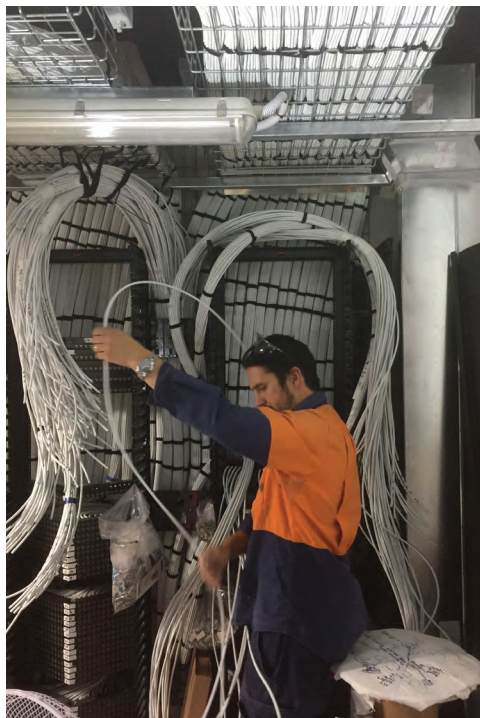
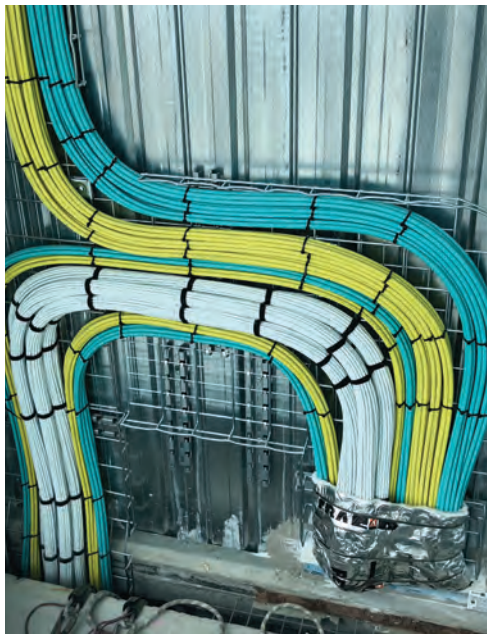
Woodside Head Office Fitout

The Brief

Woodside Capital Square in Perth's CBD is home to Woodside Energy's new 29-storey head office. Woodside had been located at 240 St Georges Terrace, Perth since 2004 and given the age of the existing fit out, the company needed a state-of-the-art base to accommodate their requirements for the future.

This project required ENGIE to deliver a complete copper & fibre structured cabling solution for the 29-floor fit out including all backbone requirements and the build of the Main Communications Room (MCR) incl. cabinets, wall frames, fibre reticulation and pathway management.

The design was completed prior to the tender being awarded to ENGIE with many design changes being implemented during construction due to client and technology updates.



The Solution

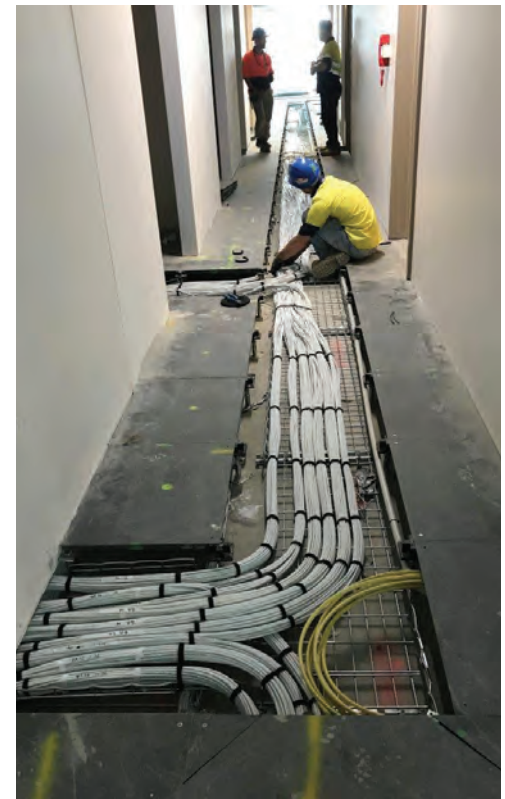
The project involved the supply and installation of the complete communications solution for Tower 1. Within the MCR, ENGIE installed 68 Schneider racks complete with hot aisle containment, 10 Schneider wall frames, overhead fibre ducting, overhead basket cable containment, all inter-rack fibre and copper cabling incl. termination, testing and labelling.

The project also included the supply and installation of 212 Schneider racks and 106 Schneider Wall frames for the 53 Floor Telecommunication Rooms (TCRs), field cabling to all floors, fibre and copper backbone cabling from each TCR to the MCR as well as backbone voice cabling to each TCR from the local FD.

The Benefit

ENGIE worked closely with Multiplex, NDY, Melchor and Woodside to deliver the complex solution on time and within budget. Due to a timeline that was compressed from 12 to 9 months, many challenges had to be overcome particularly in regard to product procurement. Strong vendor relationships and experience in delivering large projects enabled ENGIE to fast-track procurement and meet project milestones.

The project saw approximately 100 staff engaged on site by ENGIE at its peak. Over 1.5 million meters of copper cabling was installed for this project.



NECA Excellence Awards Finalist



Build of the Main Communications Room (MCR)



Deliver a complete copper & fibre structure cabling solution for the 29-floor fit out